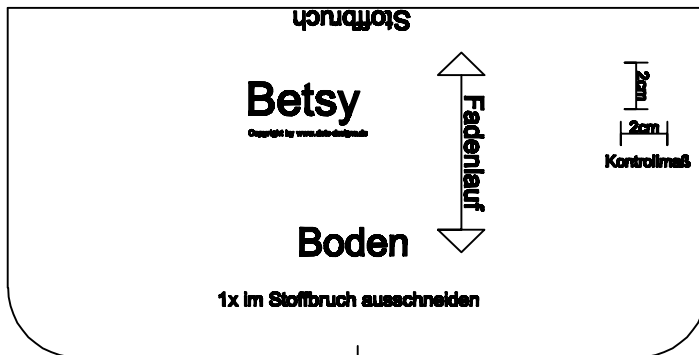
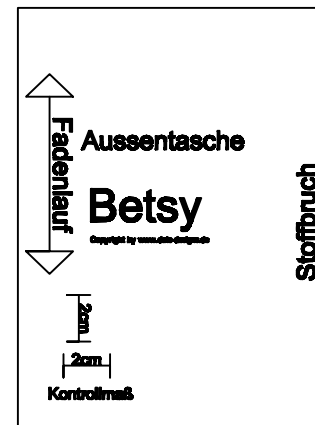


Schnittmuster Betsy

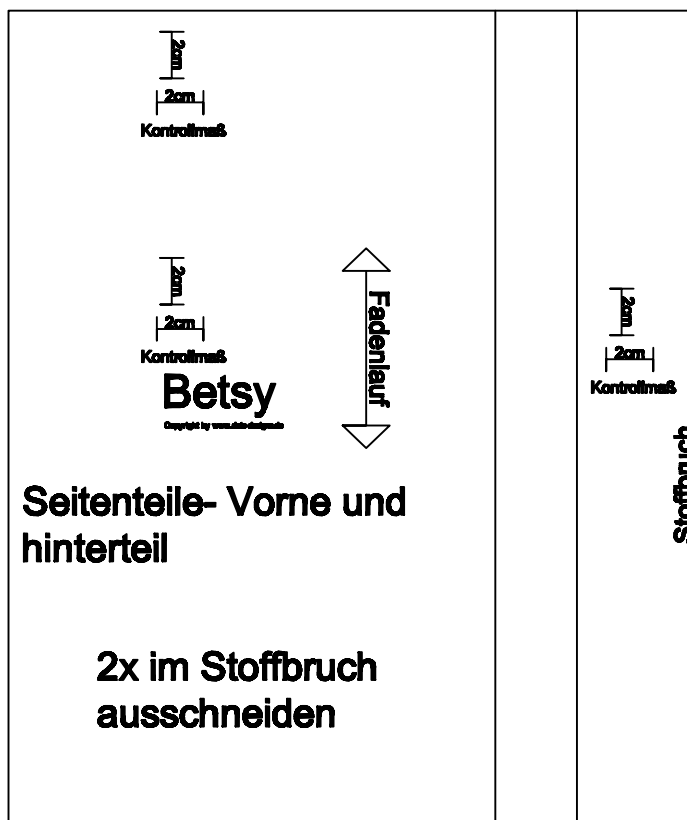
Die E-Book Anleitung und das Video -Tutorial findest Du unter:
<https://www.dots-designs.de/shoppertasche-betsy-selber-naehen>



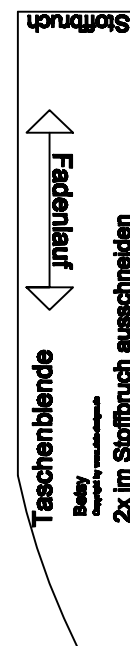
"Boden"



"Aussentasche"



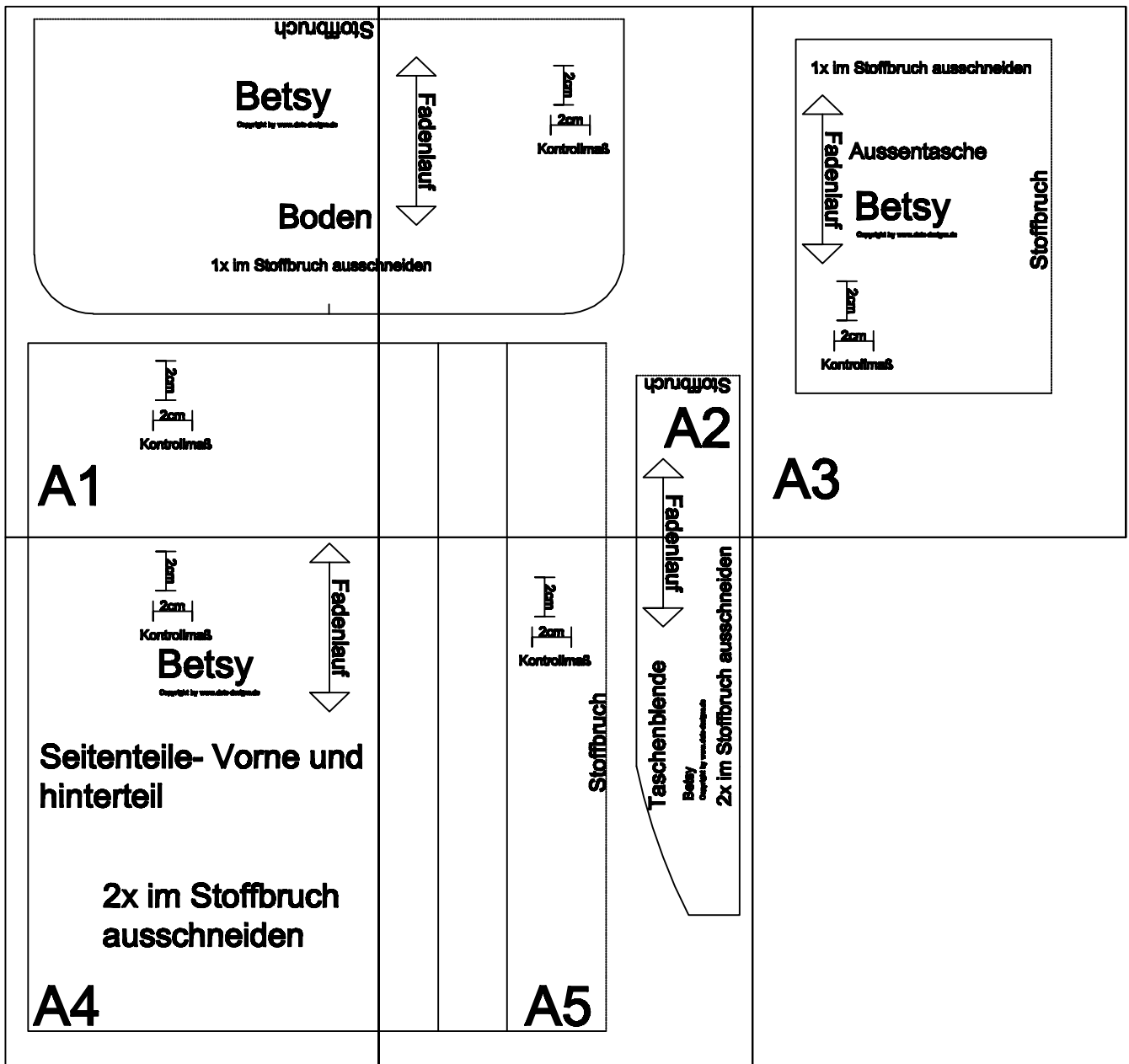
"Seitenteile- Vorne und hinterteil"



"Taschenblende"

Mehr DIY Tutorials findest Du unter: www.dots-designs.de

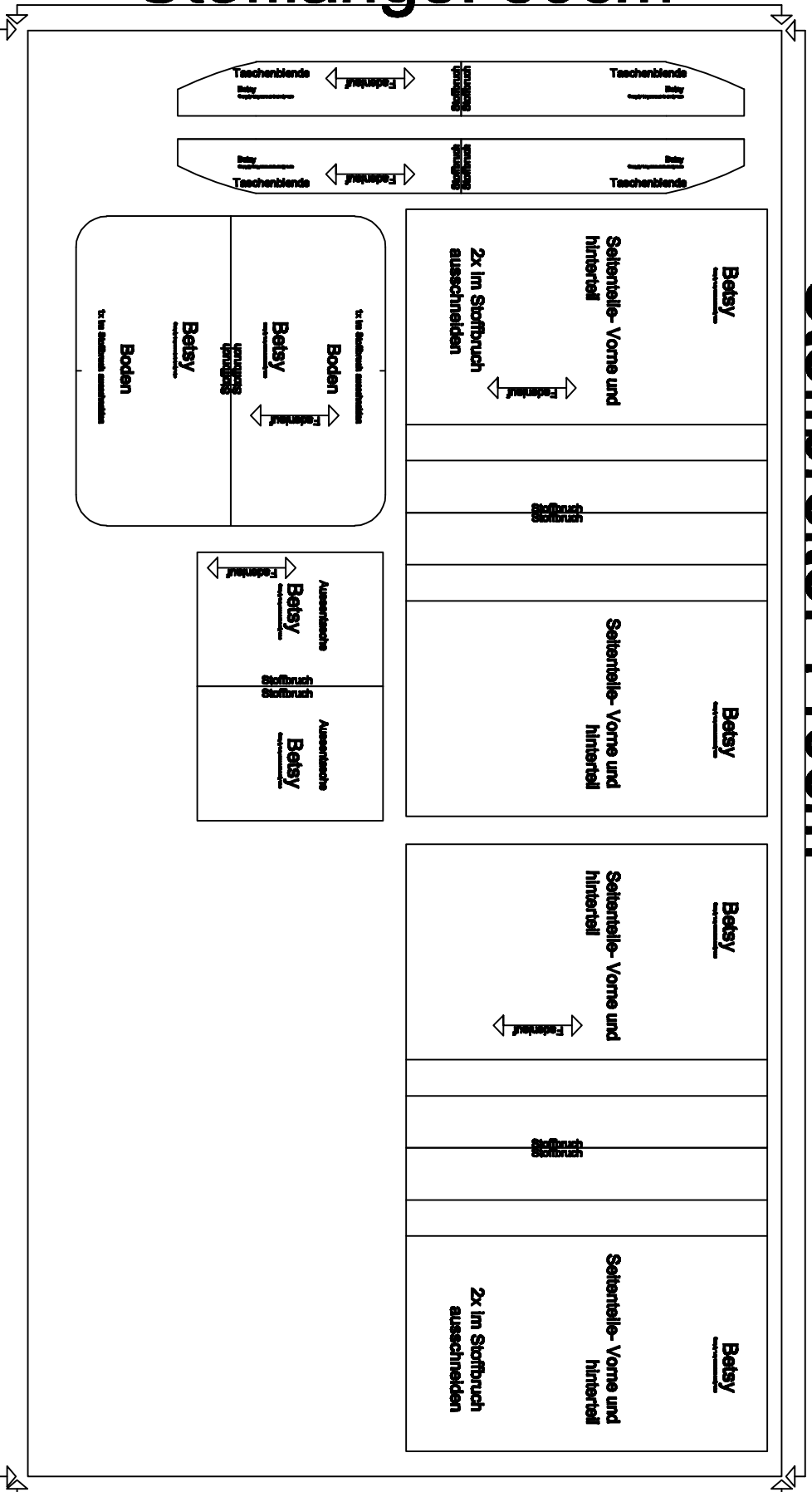
Klebeübersicht



Ausschneide Beispiel und Stoffverbrauch:

Stoffbreite: 140cm

Stofflänge: 80cm



Stoffbruch

Betsy

Copyright by www.dots-designs.de

Boden

1x im Stoffbruch aussc



2cm



2cm

Kontrollmaß

A1



Kontrollmaß

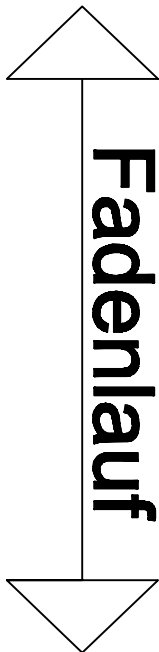
hneiden

Stoffbruch

A2



Fade



Aussentasche

Betsy

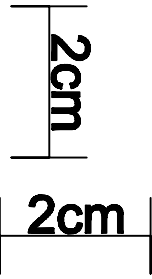
Copyright by www.dots-designs.de

Stoffbruch



Kontrollmaß

A3



Kontrollmaß

Betsy

Copyright by www.dots-designs.de



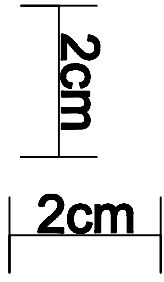
Seitenteile- Vorne und hinterteil

2x im Stoffbruch ausschneiden

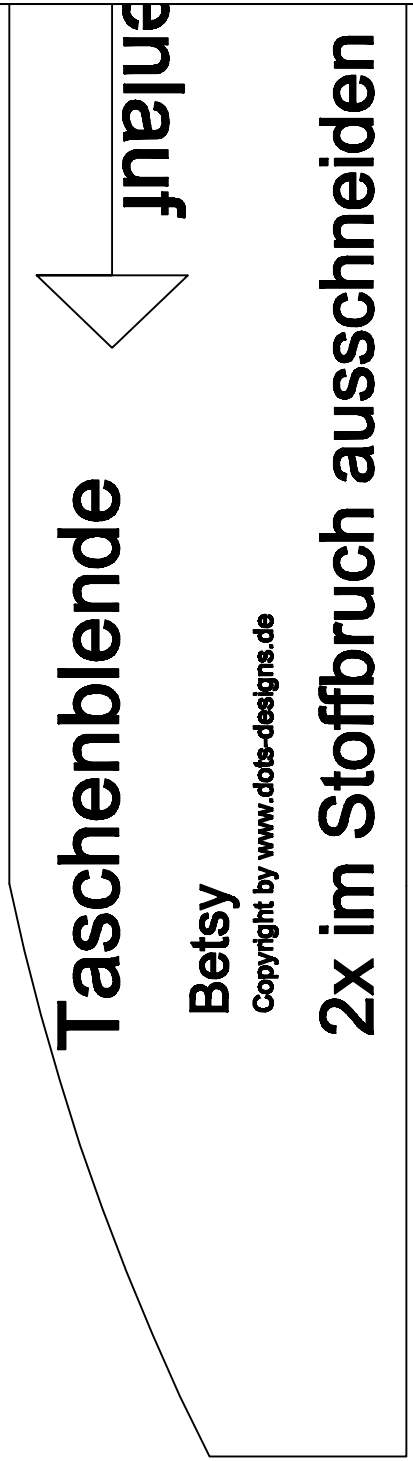
A4

A5

Kontrollmaß



Stoffbruch



Taschenblende

Betsy

Copyright by www.dots-designs.de

2x im Stoffbruch ausschneiden

Anlauf